

Type Examination Certificate

KB 55 S / EB 75 GS ↓↑

=

Type Examination Certificate

KB 55 S ↓ - AFV 374

+

Type Examination Certificate

EB 75 GS ↑ - ABV 289

EC-type examination certificate



Certificate no.: AFV 374/2

Notified body: TÜV Süddeutschland Bau und Betrieb GmbH
Zertifizierungsstelle
für Aufzüge und Sicherheitsbauteile
Westendstraße 199, D-80686 München

**Applicant/
Certificate holder:** Schlosser Aufzugtechnologie GmbH
Felix - Wankel - Straße 4
D-85221 Dachau

Date of submission: 2000-05-22

Manufacturer: Schlosser Aufzugtechnologie GmbH
Felix - Wankel - Straße 4
D-85221 Dachau

Product, type: Progressive safety gear, type KB 55 S

Test Laboratory: TÜV Süddeutschland Bau und Betrieb GmbH
Abteilung Aufzüge und Sicherheitsbauteile
Westendstraße 199, D-80686 München

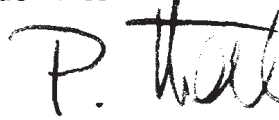
**Date and
Number of test report:** 2000-09-13
374/2

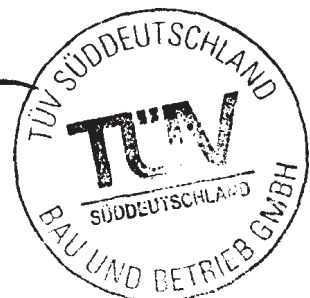
EC-directive: 95 / 16 / EC

Statement: The safety component conforms to the directive's
safety requirements for the respective scope of
application stated on page 1 of the annex to this
EC type-examination certificate.

Certificate date: 2002-08-07 (German version 2000-09-13)

Zertifizierungsstelle für Aufzüge und Sicherheitsbauteile
Identification number: 0036


Peter Tkalec



CERTIFICAT

CERTIFICADO

‘ΕΡΗΤΗΓΑΤ

認証証書

CERTIFICATE

ZERTIFIKAT

Annex to the EC type-examination certificate No. AFV 374/2 dated 2002-08-07

1. Scope of Application

- 1.1 Permissible total mass of car and rated load or counterweight in using one pair of safety gears, depends on maximum tripping speed of the overspeed governor, the manufacture and the condition of the guide rails running surface

Max. tripping speed (m/s)	Manufactured by condition	Total mass (kg) min. - max.
1,50	machined / dry or oiled*	4700 - 13350
2,63	machined / dry or oiled*	4700 - 10800
3,83	machined / dry	5363 - 8910
1,5	drawn / dry or oiled*	5800 - 10050
2,63	drawn / dry or oiled*	5800

*Mineral oils without additives (e.g. lubricating oils C according to DIN 51517 part 1)

For the intermediate values of the maximum tripping speed of 1,5 - 2,63 m/s the corresponding maximum total mass can be determined through linear interpolation in the range of 13350 - 10800 and 10050 - 5800 kg.

For the intermediate values of the maximum tripping speed of 2,63 - 3,83 m/s the corresponding maximum total mass can be determined through linear interpolation in the range of 4700 - 5363 and 10800 - 5800 kg.

- 1.2 Maximum tripping speed of overspeed governor and range of maximum rated speed

Maximum tripping speed (m/s)	1,5	2,63	3,83
Maximum rated speed (m/s)	1,20 - 1,30	2,10 - 2,29	3,06 - 3,33

- 1.3 Guide rails to be used

1.3.1 Blade width 9 - 31,80 mm

1.3.2 Minimum running surface width 35 mm

2. Remarks

- 2.1 Pursuant to the standard EN 81, annex F, paragraph 3, section 3.4. a) 2) the total mass of the progressive safety gear determined for adjustment purposes may be 7,5% higher or lower.
- 2.2 In order to provide identification and information about the basic design and its functioning and to show which parts have been tested of the approved type drawing no. 5270.600.000 dated 23 August 2000 is to be enclosed with the EC type-examination certificate and the annex thereto. The environmental conditions and connection requirements of the safety gear are presented or described in separate documents. (e.g. operating instructions).
- 2.3 The EC type - examination certificate may only be used in connection with the pertinent annex.

EC-Declaration of conformity for safety components, 2002 / 2003

Manufacturer : Schlosser Aufzugtechnologie GmbH
Felix – Wankel - Straße 4
D-85221 Dachau

Product, type: Progressive safety gear, type KB 55 S

Fabrication number: please refer to label

Year of manufacturing: please refer to label

Harmonized standards: 95 / 16 / EC, EN 81-1

Test laboratory: TÜV Süddeutschland Bau und Betrieb GmbH
Abteilung Aufzüge und Sicherheitsbauteile
Westendstraße 199, D-80686 München
(Certificate No.: 0036)

Certificate no.: AFV 374/2

Notified body: TÜV Süddeutschland Bau und Betrieb GmbH
Zertifizierungsstelle
für Aufzüge und Sicherheitsbauteile
Westendstraße 199, D-80686 München
(Certificate No.: 0036)

Confirmed:

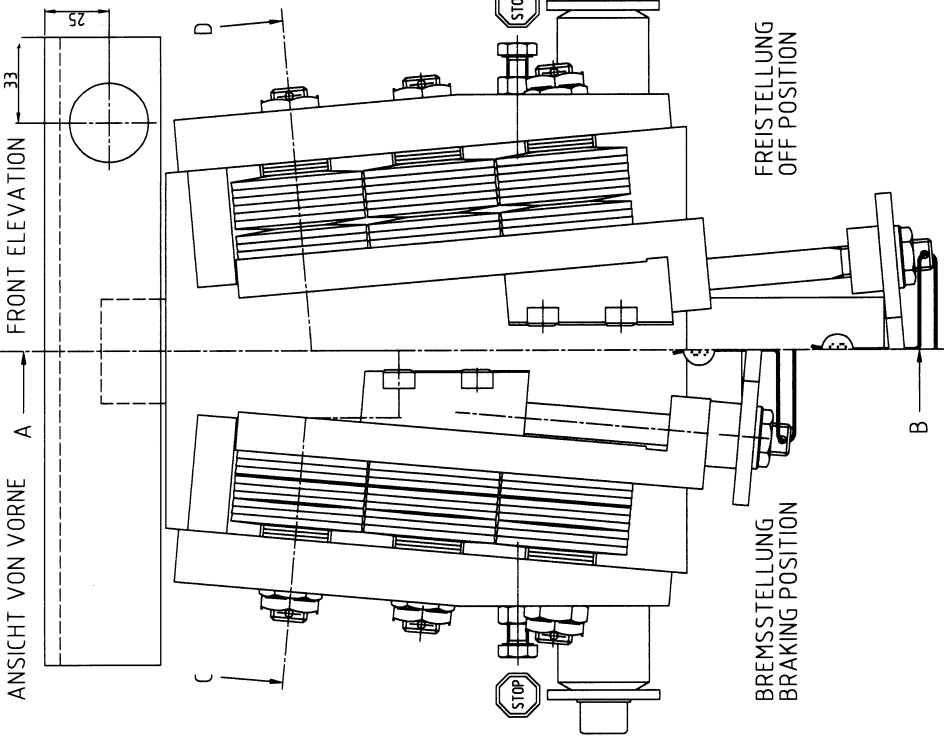


Horst Schlosser
Management

ANSICHT VON VORNE

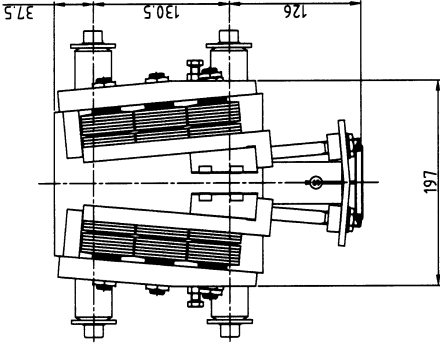
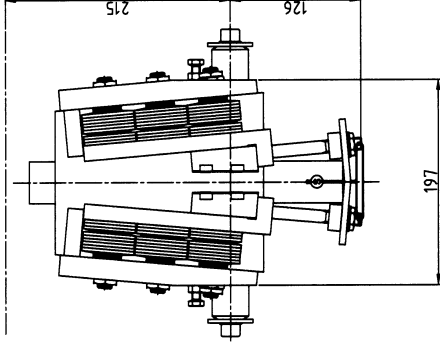
FRONT ELEVATION

ANSICHT VON VORNE
FRONT ELEVATIONS
MASSTAB 1:2.5



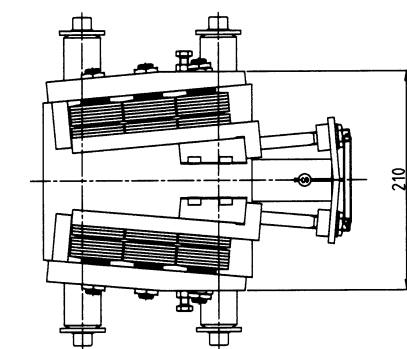
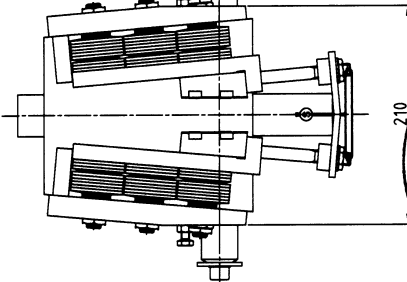
SCHIENE $\leq 20 \geq$ RAIL
1 TRAGBOLZEN - 1 KINGPIN
U-PROFIL FÜHRUNG OBEN
U-PROFILE TOP GUIDED

SCHIENE $\leq 20 \geq$ RAIL
2 TRAGBOLZEN - 2 KINGPINS
TRAGBOLZEN OBEN FÜHRT
KINGPIN ON TOP GUIDES

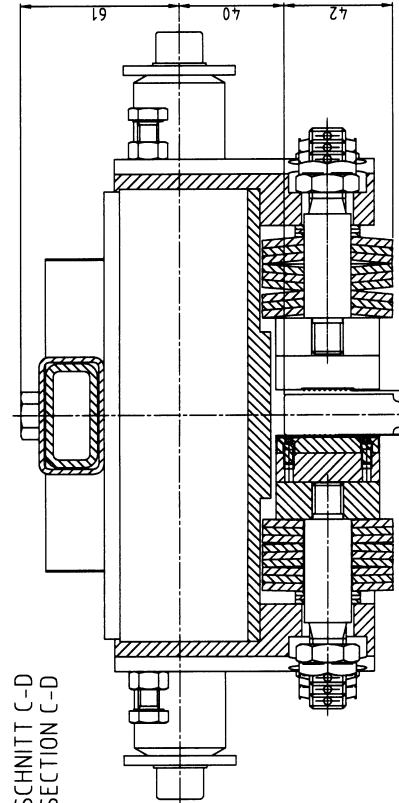


SCHIENE $\leq 32 \geq$ RAIL
1 TRAGBOLZEN - 1 KINGPIN
U-PROFIL FÜHRUNG OBEN
U-PROFILE TOP GUIDED

SCHIENE $\leq 32 \geq$ RAIL
2 TRAGBOLZEN - 2 KINGPINS
TRAGBOLZEN OBEN FÜHRT
KINGPIN ON TOP GUIDES



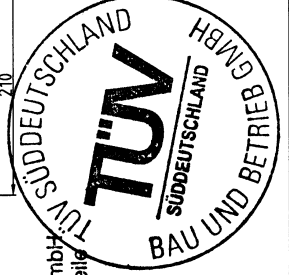
SCHNITT C-D
SECTION C-D



13. SEP. 2000

- GEPRÜFT -

TÜV Süddeutschland Bau und Betrieb GmbH
Abteilung Aufzüge- und Sicherheitsbauten
Westendstr. 199, D-80686 München
Der Sachverständige



Produktname DIN 746 mit Ver. KBS55 mit 10 Kingpin Schienehöhe $\neq 20\text{mm} / \neq 32\text{mm}$ Blattstärke	Umsatzsteuer Kategorie Kategorie Kategorie	Umsatzsteuer Kategorie Kategorie Kategorie	Umsatzsteuer Kategorie Kategorie Kategorie	Umsatzsteuer Kategorie Kategorie Kategorie
AFV 374/2	38.3 kg	KBS55	Progressive Safety Gear KBS55	5270.000.002

CERTIFICAT

CERTIFICADO

‘ΕΡΤΗΓΓΑΤ

認証証書

CERTIFICATE

ZERTIFIKAT

EC-type examination certificate



Certificate no.: ABV 289/2

Notified body: TÜV Süddeutschland Bau und Betrieb GmbH
Zertifizierungsstelle
für Aufzüge und Sicherheitsbauteile
Westendstraße 199, D-80686 München

**Applicant/
Certificate holder:** Schlosser Aufzugtechnologie GmbH
Felix - Wankel - Straße 4
D-85221 Dachau

Date of submission: 1999-04-16

Manufacturer: Schlosser Aufzugtechnologie GmbH
Felix - Wankel - Straße 4
D-85221 Dachau

Product, type: Braking device acting on the car as part of the
protection device against overspeed for the car
moving in upwards direction, type EB 75 GS

Test Laboratory: TÜV Süddeutschland Bau und Betrieb GmbH
Abteilung Aufzüge und Sicherheitsbauteile
Westendstraße 199, D-80686 München

**Date and
Number of test report:** 1999-04-20
289/2/B

EC-directive: 95 / 16 / EC

Statement: The safety component conforms to the directive's
safety requirements for the respective scope of
application stated on page 1 of the annex to this
EC type-examination certificate.

Certificate date: 2002-08-07 (German version 1999-04-20)

Zertifizierungsstelle für Aufzüge und Sicherheitsbauteile
Identification number: 0036


Peter Tkalec



Annex to the EC type-examination certificate No. ABV 289/2 dated 2002-08-07

1. Scope of Application

1.1 Permissible brake force when using the braking devices in twos, depends on maximum tripping speed of the overspeed governor and the manufacture and the of the guide rails running surface

Max. tripping speed (m/s)	Manufactured by	Brake force (N)	
		min.	max.
2,63	drawn	25898	67493
2,63	machined	24329	75341
3,83	drawn and machined	24015	62784

1.2 Maximum tripping speed of overspeed governor and range of maximum rated speed

Maximum tripping speed (m/s)	2,63	3,83
Maximum rated speed (m/s)	2,10 - 2,29	3,06 - 3,33

1.3 Guide rails to be used

1.3.1 Condition of running surface dry or oiled*
 *Mineral oils without additives
 (e.g. lubricating oils C according to DIN 51517 part 1)

1.3.2 Blade width 9 - 31,80 mm

1.3.3 Minimum running surface width 32 mm

2. Conditions

2.1 The braking device must be fastened directly to the car. The brakes must act on the guide rails.

2.2 Since the braking device represents only the decelerating element of the protection device against overspeed for the car moving in upwards direction, the speed monitoring element for upwards direction must be an overspeed governor which also retracts the braking device as per EN 81-1, section 9.9.

2.3 The forces acting in upwards direction on the guide rails must be safely absorbed (e.g. without shifting the guide tails in upwards direction).

3. Remarks

3.1 The permissible brake forces must be applied to the lift system in such a manner, that the empty car moving in upwards direction is not decelerated by more than 1 g.

3.2 In order to provide identification and information about the basic design and its functioning and to show which parts have been tested of the approved type drawing No. 5250.601.000 dated 12. April 1999 is to be enclosed with the EC type - examination certificate and the annex thereto. The environmental conditions and connection requirements of the safety gear or described in separate documents. (e.g. operating instructions).

3.3 The EC type - examination certificate may only be used in connection with the pertinent annex.

EC-Declaration of conformity for safety components, 2002 / 2003

Manufacturer : Schlosser Aufzugtechnologie GmbH
Felix – Wankel - Straße 4
D-85221 Dachau

Product, type: Braking device acting on the car as part of the
protection device against overspeed for the car
moving in upwards direction, type EB 75 GS

Fabrication number: please refer to label

Year of manufacturing: please refer to label

Harmonized standards: 95 / 16 / EC, EN 81-1

Test laboratory: TÜV Süddeutschland Bau und Betrieb GmbH
Abteilung Aufzüge und Sicherheitsbauteile
Westendstraße 199, D-80686 München
(Certificate No.: 0036)

Certificate no.: ABV 289/2

Notified body: TÜV Süddeutschland Bau und Betrieb GmbH
Zertifizierungsstelle
für Aufzüge und Sicherheitsbauteile
Westendstraße 199, D-80686 München
(Certificate No.: 0036)

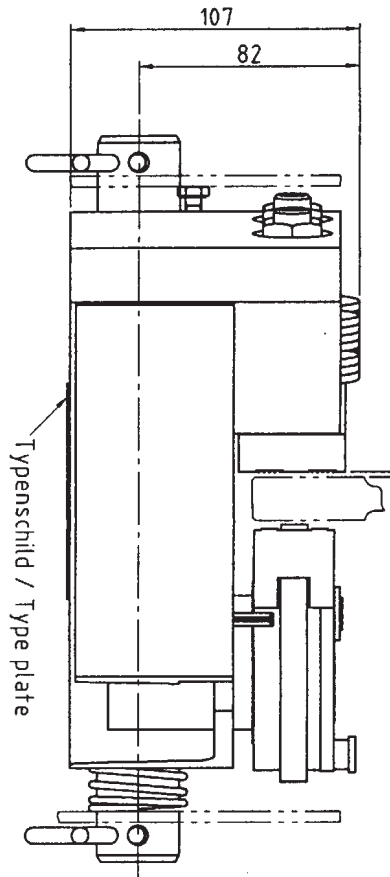
Confirmed:



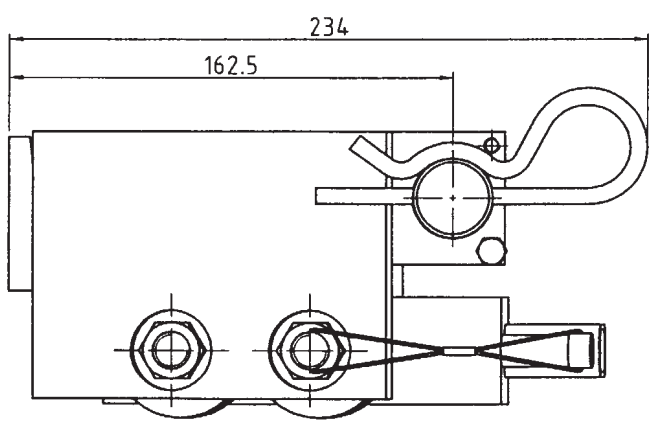
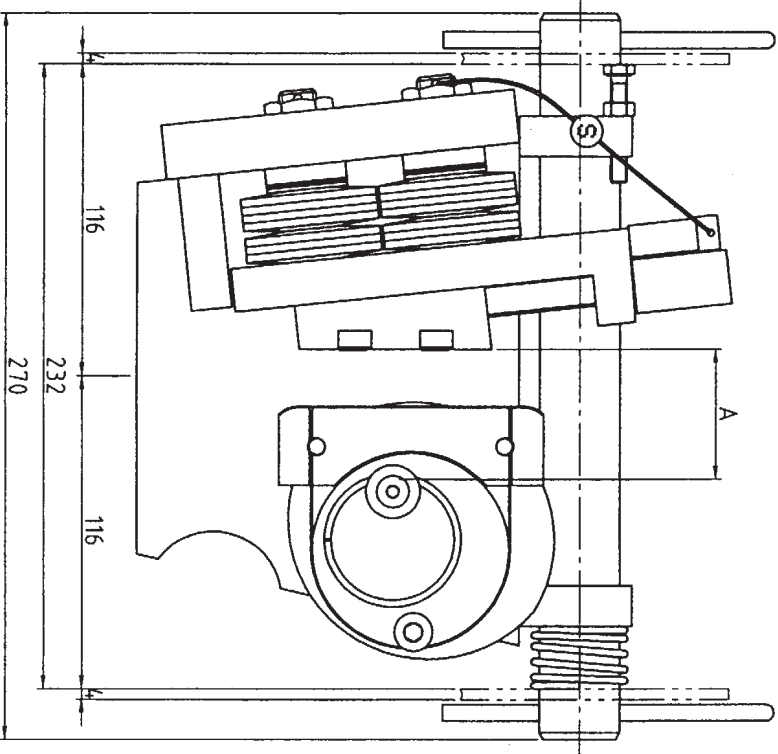
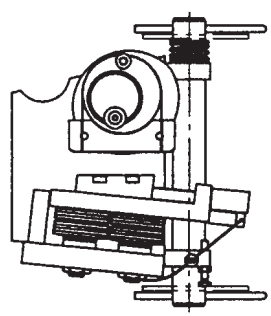
Horst Schlosser
Management

nach Betriebsanleitung

Rubr. 1 rechts / Col. 1 right



Rubr. 2 links / Col. 2 left (M 1:5)



21. APR. 1999

- GEPÜFT -
 TÜV Bau- und Betriebstechnik GmbH
 Unternehmensgruppe TÜV Süddeutschland
 Region Bayern
 Zentralabteilung Aufzüge und Sicherheitsbauteile
 Der Sachverständige
Kaplan

Verwendungsbereich		Freimaßtoleranz DIN 7168 mittel		Oberfläche	
Zust.	Änderung	Datum	Name	Maßstab	1:2
		Bearb. 12.04.99	R. Wornann	Halbzeug	Werkstoff
		Gepr.			
		Norm			
AUFZUGTECHNOLOGIE SCHLOSSER D-85221 Dachau				Werkstoff-Nr.	Gewicht (kg)
				Teil-Nr. / Zeichnungs-Nr.	5250.601.000
				BREMSRICHTUNG EB 75 GS BRAKING DEVICE EB 75 GS	
				Blatt	Blatt
				Bl	Bl