

ZERTIFIKAT

CERTIFICADO

‘ΕΡΤΙΤΤΑΤ

認証証書

CERTIFICATE

ZERTIFIKAT

EC-type examination certificate



Certificate no.: AFV 288/2

Notified body: TÜV Süddeutschland Bau und Betrieb GmbH
Zertifizierungsstelle
für Aufzüge und Sicherheitsbauteile
Westendstraße 199, D-80686 München

**Applicant/
Certificate holder:** Schlosser Aufzugtechnologie GmbH
Felix - Wankel - Straße 4
D-85221 Dachau

Date of submission: 1999-04-16

Manufacturer: Schlosser Aufzugtechnologie GmbH
Felix - Wankel - Straße 4
D-85221 Dachau

Product, type: Progressive safety gear, type EB 59 K

Test Laboratory: TÜV Süddeutschland Bau und Betrieb GmbH
Abteilung Aufzüge und Sicherheitsbauteile
Westendstraße 199, D-80686 München

**Date and
Number of test report:** 1999-04-20
288/2/F

EC-directive: 95 / 16 / EC

Statement: The safety component conforms to the directive's
safety requirements for the respective scope of
application stated on page 1 of the annex to this
EC type-examination certificate.

Certificate date: 2002-08-07 (German version 1999-04-20)

Zertifizierungsstelle für Aufzüge und Sicherheitsbauteile
Identification number: 0036


Peter Tkalec



Annex to the EC type-examination certificate No. AFV 288/2 dated 2002-08-07

1. Scope of Application

- 1.1 Permissible total mass of car and rated load or counterweight in using one pair of safety gears, depends on maximum tripping speed of the overspeed governor

Max. tripping speed (m/s)	Total mass (kg) min. - max.
1,71	750 - 1700
2,16	1700

For the intermediate values of the maximum tripping speed of 1,71 - 2,16 m/s the corresponding maximum total mass can be determined through linear interpolation in the range of 750 - 1700 kg.

- 1.2 Maximum tripping speed of overspeed governor and range of maximum rated speed

Maximum tripping speed (m/s)	1,71	2,16
Maximum rated speed (m/s)	1,37 - 1,49	1,73 - 1,88

- 1.3 Guide rails to be used

1.3.1 Running surface manufactured by drawn or machined

1.3.2 Condition of running surface dry or oiled*
Mineral oils without additives
(e.g. lubricating oils C according to DIN 51517 part 1)

1.3.3 Blade width 8 - 16 mm

1.3.4 Minimum running surface width 20 mm

2. Remarks

- 2.1 Pursuant to the standard EN 81, annex F, paragraph 3, section 3.4. a) 2) the total mass of the progressive safety gear determined for adjustment purposes may be 7,5% higher or lower.
- 2.2 In order to provide identification and information about the basic design and its functioning and to show which parts have been tested of the approved type drawing no. 5230.600.000 dated 12 April 1999 is to be enclosed with the EC type-examination certificate and the annex thereto. The environmental conditions and connection requirements of the safety gear are presented or described in separate documents. (e.g. operating instructions).
- 2.3 The EC type - examination certificate may only be used in connection with the pertinent annex.

EC-Declaration of conformity for safety components, 2002 / 2003

Manufacturer : Schlosser Aufzugtechnologie GmbH
Felix – Wankel - Straße 4
D-85221 Dachau

Product, type: Progressive safety gear, type EB 59 K

Fabrication number: please refer to label

Year of manufacturing: please refer to label

Harmonized standards: 95 / 16 / EC, EN 81-1

Test laboratory: TÜV Süddeutschland Bau und Betrieb GmbH
Abteilung Aufzüge und Sicherheitsbauteile
Westendstraße 199, D-80686 München
(Certificate No.: 0036)

Certificate no.: AFV 288/2

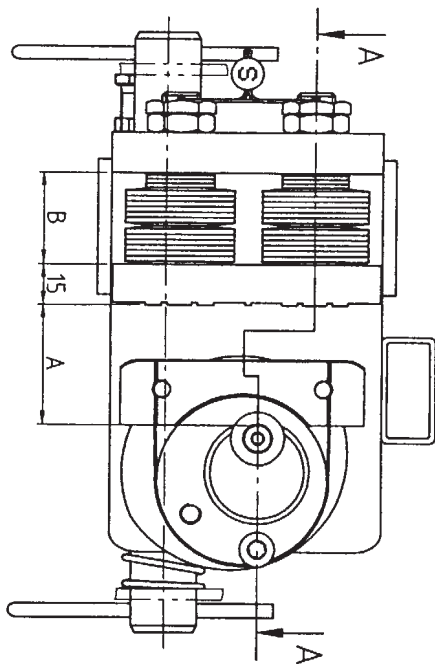
Notified body: TÜV Süddeutschland Bau und Betrieb GmbH
Zertifizierungsstelle
für Aufzüge und Sicherheitsbauteile
Westendstraße 199, D-80686 München
(Certificate No.: 0036)

Confirmed:

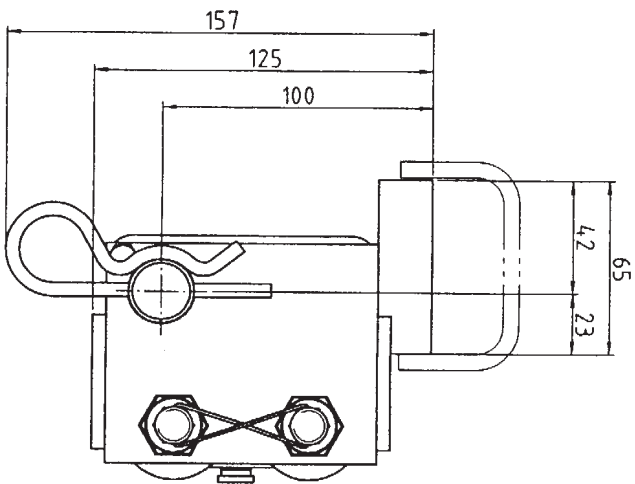
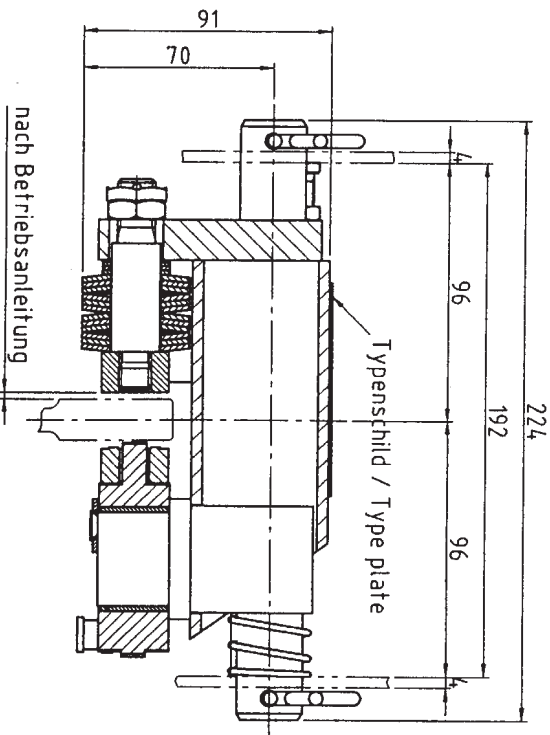


Horst Schlosser
Management

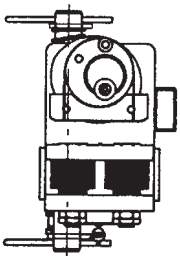
Rubr. 1 rechts / Col. 1 right



A - A



Rubr. 2 links / Col. 2 left (M 1:5)



20. APR. 1999

- GEPÜFT -

TÜV Bau- und Betriebstechnik GmbH
 Unternehmensgruppe TÜV Süddeutschland
 Region Bayern
 Zentralabteilung Aufsicht und Sicherheitsdienste
 Der Sachverständigen

Signature

Verwendungsbereich		Freiwilligkeitsbereich DIN 7168 mittel		Oberfläche		Maßstab 1:2		Position		Menge	
Zust. Änderung		Datum		Name		Verstärkung		Gewicht kg/l			
		Bearb. 12.04.99		Name M. Morawitz		Halbzeug		Verstärkung			
		Gepr. Norm		Datum		Material					
				Name		Material					
				EDV-Nr.		Material					
				AUFZUGTECHNOLOGIE SCHLOSSER D-82271 Dachau		Material					
				Teil-Nr. / Zeichnungs-Nr. 5230.600.000		Material					
				FANGVORRICHTUNG EB 59 K SAFETY GEAR EB 59 K		Material					
				Blatt		Material					
				Blatt		Material					